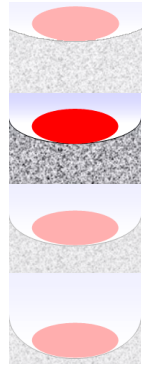


Bulatex® C167

Closed cells EPDM-based

Very good compression set
Watertight
Conformable on regular surfaces

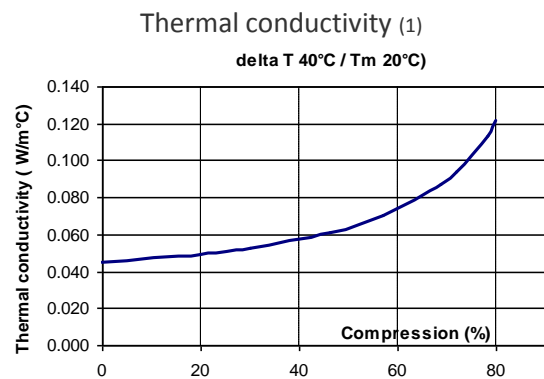
Hard
Classic
Soft
Very Soft



Properties	Test Conditions - Standard	Values
Density (1)	ISO 845	0.150
Compression deflection 25%	ASTM D1056	25 - 55 kPa (average 42 kPa)
Compression deflection 50%	NFR 99-211	80 - 160 kPa (average 115 kPa)
Compression set 23°C	ASTM D1056 50%, 22 h, 23°C	≤ 25% (average 19%)
Compression set 40°C	NFR 99-211 50%, 22h, 40°C	≤ 40% (average 25%)
Linear shrinkage	HUT CID INS LAB 10 003 After 7 days at 70°C	≤ 5%
Tearing resistance	NFR 99-211	≥ 0,5 daN/cm
Vacuum water absorption	NFR 99-211	≤ 5%
Hardness Shore 00 (1)	ASTM D 2240	30
Total carbon emission (µg C/g) (1)	VDA 277 / PV 3341	11.9
Volume resistivity (1)	IEC 60 093 120*120*2 mm -500V	10 ¹⁵ Ω.cm
Classification	ASTM D1056	2 A1/2 A2 B2 C1 F3 M P
	BMW / BMW S 603 00.0	A 941 EPDM 3 1 0.07
	GM / GMW 15473	Class II Type V
	PSA / B65 4360	EPDM 10 X C2 08 3100X0
	Renault / 03-10-102	2 C 08 B4 C2 P2
	VW / TL 52065	Depends on drawing requirements
Other features	US FMVSS 302 - UL94	Pass < 100 mm/min - HBF ≥ 3 mm to be confirmed acc. to final configuration
	Colour	Anthracite black

Temperature range (1)	
Continuous	-40°C / +100°C
Peak	+120°C
Glass transition (DSC)	-56°C
Heat capacity (DSC)	1.7 to 2.2 J.g ⁻¹ .°C ⁻¹

Chemical resistance (1)	
Oil	Low
Ozone	Excellent
Air + UV	Excellent

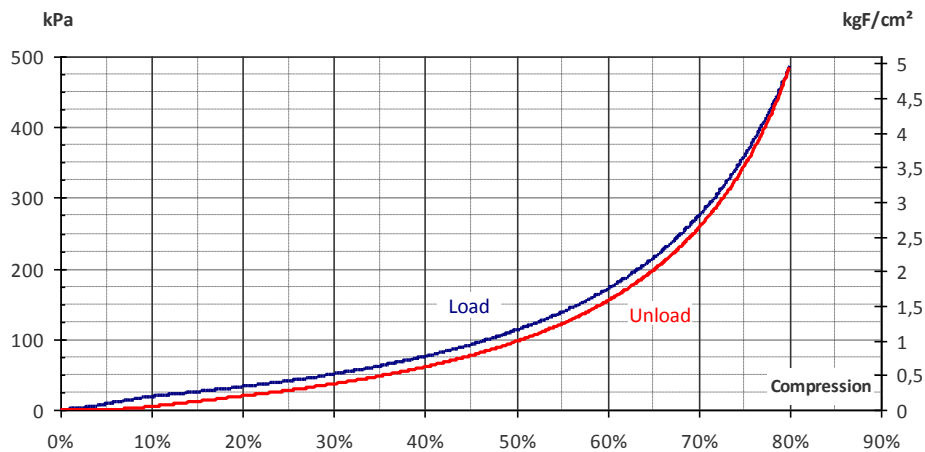


(1) For information only (indicative value)
IMP FIT-01

Bulatex® C167



Compression deflection: load & unload (1)



FOAM AND CONVERTING DIVISION
 BP56 F-45120 CHÂLETTE / LOING
 Phone: +33.2.38.87.50.40
 Contact : dcicommun@hutchinson.fr

The information given in this document results from truthful laboratory tests. However this cannot be held as a commitment on our part. Modifications can be made at any moment without notice. It is recommended to the user to verify data before use. Our technical departments are at your disposal for any advice.

(1) For information only (indicative value)
 IMP FIT-01