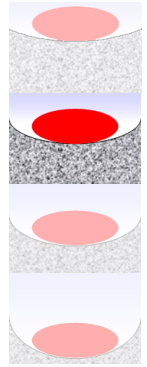


Bulatex® C162

Closed cells EPDM-based

General purpose
Watertight
Conformable on regular surfaces

Hard
Classic
Soft
Very Soft

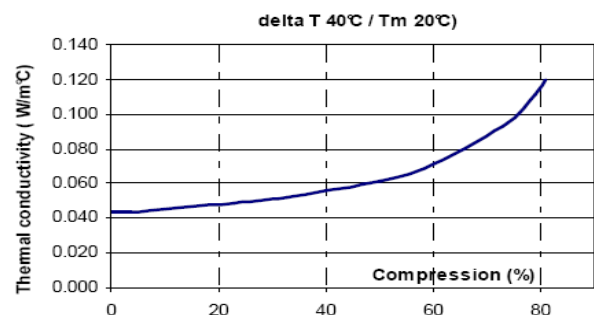


| Properties | Test Conditions - Standard | Values |
|------------------------------------|--|---|
| Density (1) | ISO 845 | 0.130 |
| Compression deflection 25% | ASTM D1056 | 25 - 55 kPa (average 40 kPa) |
| Compression deflection 50% | NFR 99-211 | 80 - 160 kPa (average 110 kPa) |
| Compression set 23°C | ASTM D1056 50%, 22 h, 23°C | ≤ 35% (average 21%) |
| Compression set 40°C | NFR 99-211 50%, 22H, 40°C | ≤ 80% (average 50%) |
| Linear shrinkage | HUT CID INS LAB 10 003 After 7 days at 70°C | ≤ 5% |
| Tearing resistance | NFR 99-211 | ≥ 0,5 daN/cm |
| Vacuum water absorption | NFR 99-211 | ≤ 5% |
| Hardness Shore 00 (1) | ASTM D 2240 | 38 |
| Total carbon emission (µg C/g) (1) | VDA 277 / PV 3341 | 11.7 |
| Volume resistivity (1) | IEC 60 093 120*120*2 mm -500V | 10 ¹⁵ Ω.cm |
| Classification | ASTM D1056 | 2 A1 A2 B3 C1 F3 M P |
| | BMW / BMW S 603 00.0 | A 940 EPDM 3 1 0.06 |
| | GM / GMW 15473 | Class II Type IV |
| | PSA / B65 4360 | EPDM 10 X C2 08 3100X0 |
| | Renault / 03-10-102 | 2 C 08 B3 C2 P2 |
| | VW / TL 52065 | Depends on drawing requirements |
| | US FMVSS 302 - UL94 | Pass < 100 mm/min - HBF ≥ 3 mm to be confirmed acc. to final configuration |
| Other features | Colour | Anthracite black |
| | Gross block dimensions | min 2000 x 1000 x 65 mm thickness with 2 skins in the 2000 x 1000 area |

| Temperature range (1) | |
|------------------------|--|
| Continuous | -40°C / +90°C |
| Peak | +110°C |
| Glass transition (DSC) | -54°C |
| Heat capacity (DSC) | 1.7 to 2.0 J.g ⁻¹ .°C ⁻¹ |

| Chemical resistance (1) | |
|-------------------------|-----------|
| Oil | Low |
| Ozone | Excellent |
| Air + UV | Excellent |

Thermal conductivity (1)

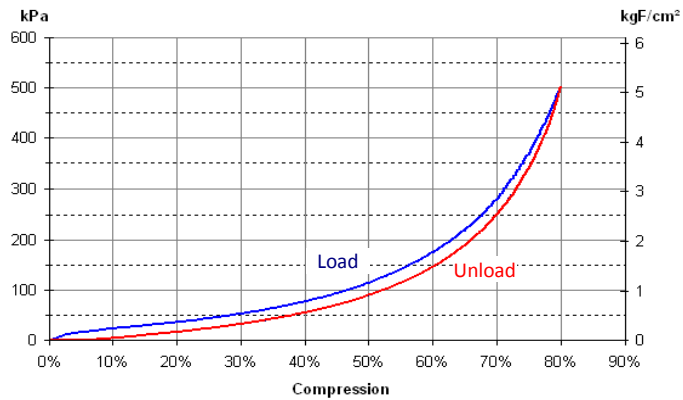


(1) For information only (indicative value)
IMP FIT-01

Bulatex® C162



Compression deflection: load & unload acc to ISO 8301 for density =0.135 (1)



FOAM AND CONVERTING DIVISION
 BP56 F-45120 CHÂLETTE / LOING
 Phone: +33.2.38.87.50.40
 Contact : dcj.commun@hutchinson.fr

The information given in this document results from truthful laboratory tests. However this cannot be held as a commitment on our part. Modifications can be made at any moment without notice. It is recommended to the user to verify data before use. Our technical departments are at your disposal for any advice.

(1) For information only (indicative value)
IMP FIT-01